

STONERIDGE DIGITAL KIT 7800-163



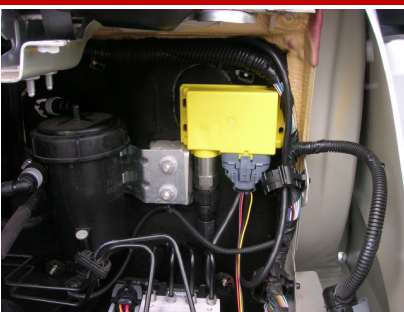
VEHICLE MANUFACTURER	PEUGEOT/CITROEN
MODEL	BOXER/RELAY
YEAR OF MANUFACTURE	2008-2014
ENGINE TYPE	ALL
TRANSMISSION	ALL
VOLTAGE	12V



THE CANBUS INTERFACE LISTED BELOW IS ADDITIONAL TO THE KIT AND IS ADDED ON A SALE OR RETURN BASIS.

PARTS LIST	QUANTITY
M1N1 KIT	1
CANBUS INTERFACE SALE OR RETURN	1
APPLICATION SHEET	1

FITTING INFORMATION



M1/N1 TO BE SECURED TO NEARSIDE UNDER BONNET PICTURED LEFT.

POWER, IGNITION AND EARTH CONNECTIONS CAN BE FOUND AT FUSE BOX BEHIND OFFSIDE LOWER PANEL AT DRIVER SIDE. CONNECT A1 THROUGH 1 AMP FUSE.

TACHOGRAPH LOCATES IN SPARE ISO SLOT ABOVE RADIO.

TACHOGRAPH A PLUG CONNECTIONS

M1N1 CONNECTIONS

PIN 1 - PERMANENT +12V FEED

RED WIRE TO PERMANENT + VE

PIN 2 - ILLUMINATION FEED

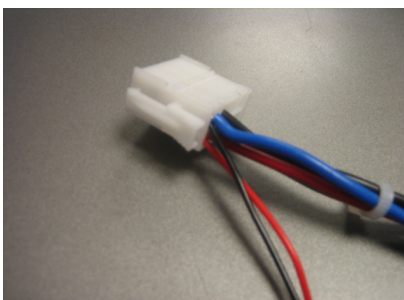
BLACK WIRE TO GROUND NEGATIVE

PIN 3 - IGNITION FEED

YELLOW WIRE TO VEHICLE SPEED PULSE

PIN 5- GROUND CHASSIS

PIN 6- GROUND CHASSIS



Workshop Technical Support

Tel +44 (0) 1382 866 700

Fax +44 (0) 1382 866 401

Email workshop.support@stoneridge.com

Sales Office

Tel +44 (0) 1382 866 400 (choose opt.1)

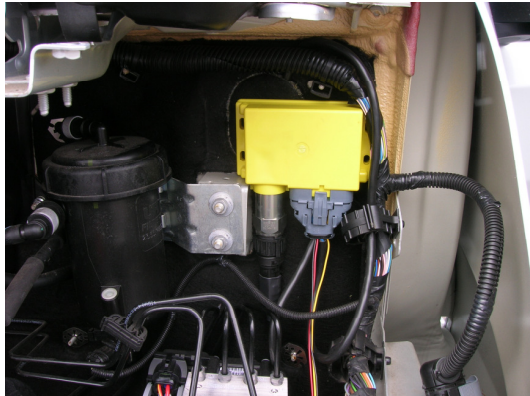
Fax +44 (0) 1382 866 401

Email sales@stoneridge.com

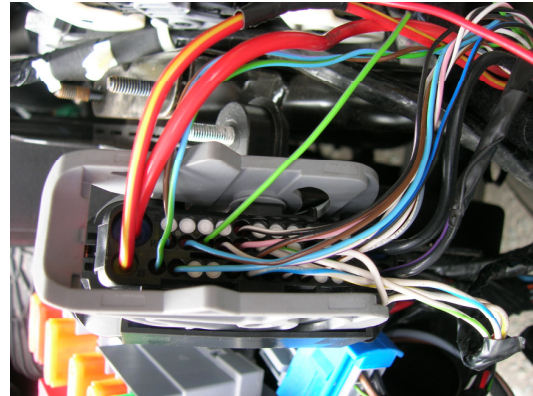


Whilst we have endeavoured to ensure the accuracy of the information supplied, Stoneridge Electronics cannot be held responsible for any errors or omissions. It is the installer's responsibility to ensure compliance with specific vehicle manufacturers repair procedures, especially with regard to the procedure for disconnection/reconnection of the battery. Failure to comply with the vehicle manufacturers instructions may result in personal injury and/or component damage/data loss.

DIGITAL APPLICATION SHEET



1. Locate and secure the M1N1 adaptor to Near-side rear under bonnet



2. Make waterproof connections between ABS Pump Connector Pin 16 Green wire & the M1N1 Yellow wire.



3. Feed the wires from the M1N1 adaptor & the tachograph Power harness through the slot. Mount VU and ensure it can be removed from its enclosure with all cables attached.



4. Seal the Connector and Sender to the Adaptor through the Red seal. Seal the Adaptor to the chassis of vehicle through the 2 of the diagonal holes that have been drilled for securing the M1N1 Adaptor. Note: The M1N1 MUST be fixed to a non removable part of the vehicle.

Workshop Technical Support

Tel +44 (0) 1382 866 700

Fax +44 (0) 1382 866 401

Email workshop.support@stoneridge.com

Sales Office

Tel +44 (0) 1382 866 400 (choose opt.1)

Fax +44 (0) 1382 866 401

Email sales@stoneridge.com



Whilst we have endeavoured to ensure the accuracy of the information supplied, Stoneridge Electronics cannot be held responsible for any errors or omissions. It is the installer's responsibility to ensure compliance with specific vehicle manufacturers repair procedures, especially with regard to the procedure for disconnection/reconnection of the battery. Failure to comply with the vehicle manufacturers instructions may result in personal injury and/or component damage/data loss.

DIGITAL APPLICATION SHEET



1. The 2nd Source of motion is obtained by using the GPS Module and cable harness, as shown above.



2. The cable harness is connected directly in line with the tachograph power cable when connecting to the tachograph as shown.



3. The GPS Module should be placed in a suitable area within the cab, preferably in an area next to the windscreen.

C3-Factor	Minimum L	Maximum L
13	1563	1688
14	1688	1813
15	1813	1938
16	1938	2063
17	2063	2188
18	2188	2313
19	2313	2438
20	2438	2563
21	2563	2688
22	2688	2813
23	2813	2938
24	2938	3063
25	3063	3188
26	3188	3313
27	3313	3438
28	3438	3563

4. Set the IMS input to C3 enable in MKIII Programmer, Sensor Settings and set the Speed Factor to correct C3 Factor value using the L factor table above.

Workshop Technical Support

Tel +44 (0) 1382 866 700

Fax +44 (0) 1382 866 401

Email workshop.support@stoneridge.com

Sales Office

Tel +44 (0) 1382 866 400 (choose opt.1)

Fax +44 (0) 1382 866 401

Email sales@stoneridge.com



Whilst we have endeavoured to ensure the accuracy of the information supplied, Stoneridge Electronics cannot be held responsible for any errors or omissions. It is the installer's responsibility to ensure compliance with specific vehicle manufacturers repair procedures, especially with regard to the procedure for disconnection/reconnection of the battery. Failure to comply with the vehicle manufacturers instructions may result in personal injury and/or component damage/data loss.